

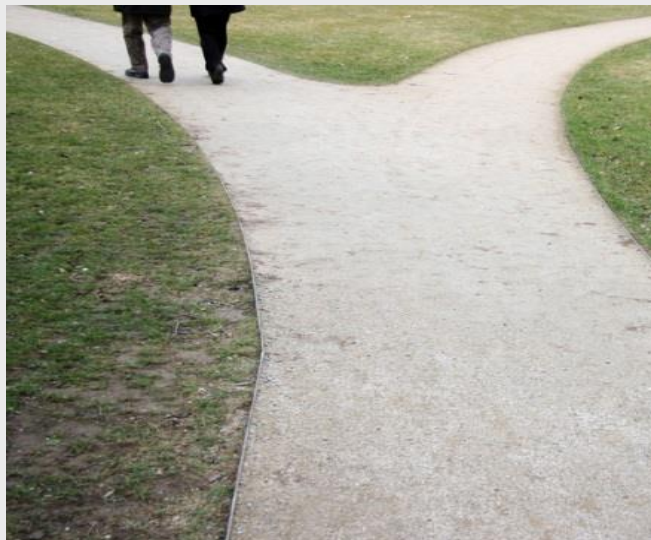


MAX PLANCK INSTITUTE
FOR DEMOGRAPHIC
RESEARCH

WORKSHOP PROGRAM

The science of choice

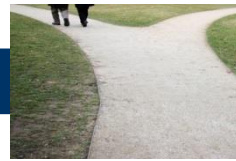
How to model the decision-making process?



Rostock, October 28 to 30, 2015

VENUE

Max-Planck-Institute for Demographic Research
Konrad-Zuse-Straße 1
18057 Rostock
 demogr.mpg.de



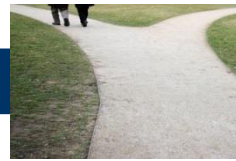
Wednesday, October 28

Presentations will be 30 minutes, followed by a 15 minutes discussion.

- 10:30-10:45 Welcome (Frans Willekens)
- 10:45-12:15 **Keynote Lecture:**
Joan Walker
Modeling Choice
- 12:15-13:00 Lunch
- 13:00-15:15 **Session: The decision who to enter a relationship with**
Chair: Stefanie Kley
- Sebastian Pink and Lars Leszczensky*
Ethnic segregation of friendship networks in school: Testing a rational- choice argument of differences in ethnic homophily between classroom- and grade-level networks
- André Grow and Jan van Bavel*
Mate choice and preferences: The reversal of the gender gap in education and its consequences for union formation and stability in Europe
- Lucky Singh*
Examining the association between social network and mental health among older adults: Evidence from a rural Indian setting
- 15:15-15:45 Coffee
- 15:45-18:00 **Session: The decision to migrate**
Chair: Jakub Bijak
- Anna Klabunde, Frans Willekens, Sabine Zinn and Matthias Leuchter*
Life course modeling extended by behavioral rules - Migration from Senegal to Southern Europe
- Ruth Achenbach*
A qualitative model of return migration decisions of highly skilled Chinese in Japan
- Stefanie Kley*
Facilitators and constraints at each stage of the migration process
- 19:00 Conference Dinner

Thursday, October 29

- 09:00-10:30 **Session: Implementation of decision-making in simulation studies I**
Chair: Frans Willekens
- Jonathan Gray, Jason Hilton and Jakub Bijak*
Choosing a choice model: Reflections on modelling decisions and behaviour in agent-based models
- Tom Warnke, Anna Klabunde, Sebastian Plath, Oliver Reinhardt, Frans Willekens, and Adelinde Uhrmacher*
Modelling and simulating decision processes with a domain specific language
- 10:30-11:00 Coffee



Thursday, October 29

11:00-12:30

Session: Implementation of decision-making in simulation studies II

Chair: Anna Klabunde

Martin Klein

Modeling investment choices: The case of roof-top solar photovoltaics in Germany

Ingo Wolf and Tobias Schröder

Social life versus enjoyment of nature: Modeling competing psychological needs underlying housing decisions as parallel constraint satisfaction

12:30-13:30

Lunch

13:30-15:00

Session: Decision-making in couples

Chair: André Grow

Christian Schmitt and Pia Schober

Fertility decision making, bargaining power and preference reconciliation in couples

Naa Dadua Dadoo and Francis Dadoo

More than just 'final say': Developing a survey measure of the process of household decision-making in Ghana

15:00-15:30

Coffee

15:30-17:00

Session: Decisions involving strategic interaction and bargaining from a theoretical perspective

Chair: Sebastian Pink

Linh Chi Nguyen and Luciano Andreozzi

Evolution of behaviors in repeated bargaining game. A computer simulation study

Geeske Scholz

Social influence in the decision process

19:00

Informal dinner and get-together in a traditional Rostock pub

Friday, October 30

09:00-10:30

Session: The decision to have a child

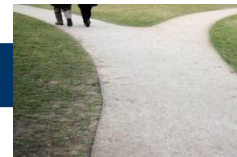
Chair: Thomas Fent

Maria Rita Testa and Dimiter Philipov

Intended family trajectories and education

Ridhi Kashyap

An application of the 'ready, willing and able' framework to sex ratio at birth distortions: A simulation approach



Friday, October 30

10:30-11:00 Coffee

11:00-12:30 Session: Decisions related to the working life

Chair: Alexia Fűrnkranz-Prskawetz

Sebastian Bähr, Martin Abraham, Katharina Diener and Gerhard Krug

Do fathers' flexible working schedules influence their decision to support mothers' return to employment? A factorial survey analysis

Meritxell Sole, Concepció Patxot, Guadalupe Souto and Martin Spielauer


The retirement decision in a context of reforms and economic crisis: a microsimulation approach

12:30-13:30 Lunch

13:30-14:00 Summary and further steps

14:00 End of workshop


VENUE

Max-Planck-Institute for Demographic Research
Konrad-Zuse-Straße 1
18057 Rostock
 demogr.mpg.de



CONFERENCE DINNER (Wednesday)

Zwanzig12
Schnickmannstr. 14
18055 Rostock
 zwanzig12.de

GET-TOGETHER (Thursday)

Braugasthaus „Zum alten Fritz“
Warnowufer 65
18057 Rostock
 alter-fritz.de

REGISTRATION

Ute Papenhagen
 decisionmaking@demogr.mpg.de
 +49 (0) 381 2081-270